

DISTRIBUIDORES

Control valves
Distributeurs
Distributori

PUMPS

CONTROL COMPONENTS

MOTION DEVICE

ACCESSORIES

MINI POWER PACKS

HYDRAULIC COMPONENTS
GREENLINE



Distribuidor 3/8" BSP, 45L, acc. palanca y retorno por muelle a posición central. Limit.

Control valve 3/8 BSP, 45L/MIN, handle operated and return to center by spring. Relief valve

Distributeur 3/8 BSP, 45L/min, commande manuelle, retour au centre par ressort. Limit. press.

Distributore 3/8 BSP,45 lt./min.,azion. a leva e ritorno a molla. Valv. Di max

Referencia Part n°	ROSCA THREAD	CAUDAL MÁX. (l/min) MAX. FLOW (l/min)	PRESIÓN MÁX. (bar) MAX. PRESSURE (bar)	Nº PALANCAS Nº LEVERS	€
YFM35/1 3/8 1P DE	3/8" BSP	45	315	1	183,08
YFM35/1 3/8 1P SE	3/8" BSP	45	315	1	202,84
YFM35/2 3/8 2P DD	3/8" BSP	45	315	2	291,49
YFM35/2 3/8 2P DS	3/8" BSP	45	315	2	317,78
YFM35/3 3/8 3P DDD	3/8" BSP	45	315	3	399,77
YFM35/3 3/8 3P DDS	3/8" BSP	45	315	3	420,01
YFM35/4 3/8 4P DDDD	3/8" BSP	45	315	4	508,91
YFM35/5 3/8 5P DDDDD	3/8" BSP	45	315	5	656,98
YFM35/6 3/8 6P DDDDDD	3/8" BSP	45	315	6	747,82

SE/S= Simple efecto, DE/D= Doble efecto / SE/S= Single acting, DE/D= Double acting / SE/S= Simple effet, DE/D= Double effet / SE/S=Semplice effetto, DE/D= Doppio effetto



Distribuidor 1/2" BSP, 60L, acc. palanca y retorno por muelle a posición central. Limit.

Control valve 1/2 BSP, 60L/min, handle operated and return to center by spring. Relief valve

Distributeur 1/2 BSP, 60L/min, commande manuelle, retour au centre par ressort. Limit. press.

Distributore 1/2 BSP,60 lt./min.,azion. a leva e ritorno a molla. Valv. Di max

Referencia Part n°	ROSCA THREAD	CAUDAL MÁX. (l/min) MAX. FLOW (l/min)	PRESIÓN MÁX. (bar) MAX. PRESSURE (bar)	Nº PALANCAS Nº LEVERS	€
YFM55/1 1/2 1P DE	1/2" BSP	60	315	1	212,63
YFM55/1 1/2 1P SE	1/2" BSP	60	315	1	225,61
YFM55/2 1/2 2P DD	1/2" BSP	60	315	2	335,75
YFM55/2 1/2 2P DS	1/2" BSP	60	315	2	373,45
YFM55/2 1/2 2P SS	1/2" BSP	60	315	2	610,27
YFM55/3 1/2 3P DDD	1/2" BSP	60	315	3	457,53
YFM55/3 1/2 3P DDS	1/2" BSP	60	315	3	507,43
YFM55/4 1/2 4P DDDD	1/2" BSP	60	315	4	612,74
YFM55/5 1/2 5P DDDDD	1/2" BSP	60	315	5	741,92
YFM55/6 1/2 6P DDDDDD	1/2" BSP	60	315	6	899,56

SE/S= Simple efecto, DE/D= Doble efecto / SE/S= Single acting, DE/D= Double acting / SE/S= Simple effet, DE/D= Double effet / SE/S=Semplice effetto, DE/D= Doppio effetto



Distribuidor 1" BSP, 120L, acc. palanca y retorno por muelle a posición central. Limit.

Control valve 1" BSP, 120L/min, handle operated and return to center by spring. Relief valve

Distributeur 1" BSP, 120L/min, commande manuelle, retour au centre par ressort. Limit. press.

Distributore 1" BSP,120 lt./min.,azion. a leva e ritorno a molla. Valv. Di max

Referencia Part n°	ROSCA THREAD	CAUDAL MÁX. (l/min) MAX. FLOW (l/min)	PRESIÓN MÁX. (bar) MAX. PRESSURE (bar)	Nº PALANCAS Nº LEVERS	€
YFM120/1 1 1P DE	1" BSP	120	250	1	463,32
YFM120/1 1 1P SE	1" BSP	120	250	1	463,32
YFM120/2 1 2P DD	1" BSP	120	250	2	645,80
YFM120/2 1 2P DS	1" BSP	120	250	2	645,80

SE/S= Simple efecto, DE/D= Doble efecto / SE/S= Single acting, DE/D= Double acting / SE/S= Simple effet, DE/D= Double effet / SE/S=Semplice effetto, DE/D= Doppio effetto

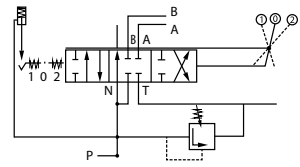
DISTRIBUIDORES

Control valves
Distributeurs
Distributori



Distribuidor 1/2" BSP, 80L, cort.leña doble efecto

Control valve 1/2 BSP, 80l/min - log splitter double acting
Distributeur 1/2 BSP, 80l/min, fendeuse à bois double effet
Distributore 1/2 BSP,80 lt./min., taglia legna a doppio effetto

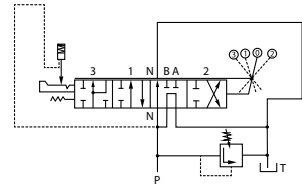


Referencia Part n°	A/B	P/T	CAUDAL MÁX. (l/min) MAX. FLOW (l/min)	PRESIÓN MAX. (bar) MAX. PRESSURE (bar)	€
YFM80/1DECL	1/2" BSP	3/4" BSP	80	250	224,62



Distribuidor 1/2" BSP, 80L, cort.leña tipo regenerativo

Control valve 1/2 BSP, 80l/min - log splitter regenerative type
Distributeur 1/2 BSP, 80L/min, fendeuse à bois type regeneratif
Distributore 1/2 BSP,80 lt./min., tipo rigenerativo

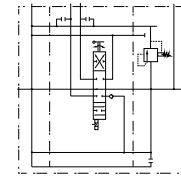


Referencia Part n°	A/B	P/T	CAUDAL MÁX. (l/min) MAX. FLOW (l/min)	PRESIÓN MAX. (bar) MAX. PRESSURE (bar)	€
YFM80/1DECL4P	1/2" BSP	3/4" BSP	80	250	280,79



Distribuidor rotativo 1" BSP, 240L, corr.motor, Limit.

Rotary control valve 1"BSP, 240l/min, open center a/w R.V.
Distributeur rotatif 1"BSP, 240l/min, centre ouvert, avec LP
Distributore rotativo 1" BSP, 240 lt., curs. motore, valv. max



Referencia Part n°	ROSCA THREAD	CAUDAL MÁX. (l/min) MAX. FLOW (l/min)	PRESIÓN MAX. (bar) MAX. PRESSURE (bar)	€
YFM240/1 M ROT	1" BSP	240	315	2.262,17

FLUIDAL

DISTRIBUIDORES

Control valves
Distributeurs
Distributori

PUMPS

CONTROL COMPONENTS

MOTION DEVICE

ACCESSORIES

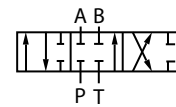
MINI POWER PACKS

HYDRAULIC COMPONENTS GREENLINE

Corredera doble efecto YFM



YFM Closed center spool
Tiroir centre fermé YFM
Cursore doppio effetto YFM

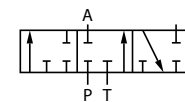


Referencia Part n°	DISTRIBUIDOR CONTROL VALVE	€
YFM35CORDE	YFM 35	53,77
YFM55CORDE	YFM 55	62,89

Corredera simple efecto YFM



YFM Single acting spool
Tiroir simple effet YFM
Cursore semplice effetto YFM

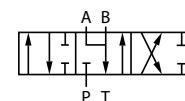


Referencia Part n°	DISTRIBUIDOR CONTROL VALVE	€
YFM35CORSE	YFM 35	61,63
YFM55CORSE	YFM 55	70,81

Corredera motor YFM



YFM Open center spool
Tiroir centre ouvert YFM
Cursore motore YFM

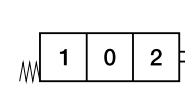


Referencia Part n°	DISTRIBUIDOR CONTROL VALVE	€
YFM35CORM	YFM 35	53,77
YFM55CORM	YFM 55	62,89

Accionamiento muelle standard



Standard spring spool control
Actionnement ressort standard
Azionamento molla standard

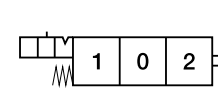


Referencia Part n°	DISTRIBUIDOR CONTROL VALVE	€
YFM35002	YFM 35	20,96
YFM55002	YFM 55	20,96

Accionamiento 3 posiciones enclavado central muelle



3 positions spool control locked center spring
Actionnement 3 positions cranté centre ressort
Azionamento 3 posizioni, Blocco pos. 2, centrale a molla

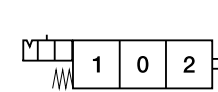


Referencia Part n°	DISTRIBUIDOR CONTROL VALVE	€
YFM35003	YFM 35	57,70
YFM55003	YFM 55	57,70

Accionamiento 3 posiciones muelle central enclavado



3 positions center spool center spring locked
Actionnement 3 positions ressort central cranté
Azionamento 3 posizioni, Blocco pos. 1, centrale a molla



Referencia Part n°	DISTRIBUIDOR CONTROL VALVE	€
YFM35004	YFM35	57,70
YFM55004	YFM 55	57,70

DISTRIBUIDORES

Control valves
Distributeurs
Distributori

PUMPS

CONTROL COMPONENTS

MOTION DEVICE

ACCESSORIES

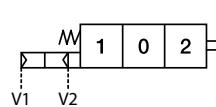
MINI POWER PACKS

HYDRAULIC COMPONENTS
GREENLINE

Accionamiento neumático



Pneumatic spool control
Actionnement pneumatique
Azionamento pneumatico

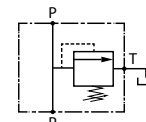


Referencia Part n°	ROSCA THREAD	DISTRIBUIDOR CONTROL VALVE	€
YFM35010	1/8" BSP	YFM 35	162,52
YFM55009	1/8" BSP	YFM 55	162,52

Válvulas limitadoras YFM35



YFM35 Relief valves
Limiteurs de pression YFM35
Valvole de regolazione pressione YFM35

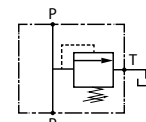


Referencia Part n°	CAMPO REG. (bar) REG. RATE (bar)	€
YFM35008	40-80	58,96
yfm35013	60-200	58,96
YFM35009	160-315	58,96

Válvulas limitadoras YFM55



YFM55 Relief valves
Limiteurs de pression YFM55
Valvole de regolazione pressione YFM55



Referencia Part n°	CAMPO REG. (bar) REG. RATE (bar)	€
YFM55005	40-80	64,22
YFM55008	160-315	64,22

Racor continuación presión



Carry over plug / fitting
Bouchon/ raccord centre à suivre
Continuazione pressione (carry over)

Referencia Part n°	DISTRIBUIDOR CONTROL VALVE	€
YFM35005	YFM 35/55 YE45 YEM45	2,13
YFM00006	YFM120	17,47
NEW YFM00008	YEMC50	1,60

YFM00006 foto superior y YFM35005 - YFM00008 foto inferior / YFM00006 top photo and YFM35005 - YFM00008 bottom photo / YFM00006 photo du haut y YFM35005 - YFM00008 photo du bas / YFM00006 foto superiore e YFM35005 - YFM00008 foto inferiore

Portapalanca



Lever holder
Porte levier
Supporti leva



Referencia Part n°	DISTRIBUIDOR CONTROL VALVE	€
YFM35006	YFM 35	34,07
YFM55006	YFM 55	34,07

DISTRIBUIDORES

Control valves
Distributeurs
Distributori

PUMPS

CONTROL COMPONENTS



Palanca

Lever
Levier
Leva

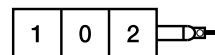
Referencia Part n°	DISTRIBUIDOR CONTROL VALVE	€
YFM35/55 001	YFM 35 / YFM 55	11,78

MOTION DEVICE



Kit sirga

Cable kit
Kit Cable
Kit cavo



Referencia Part n°	DISTRIBUIDOR CONTROL VALVE	€
YFM35007	YFM 35	41,93
YFM55007	YFM 55	41,93

ACCESSORIES

MINI POWER PACKS

HYDRAULIC COMPONENTS
GREENLINE

FLUIDAL

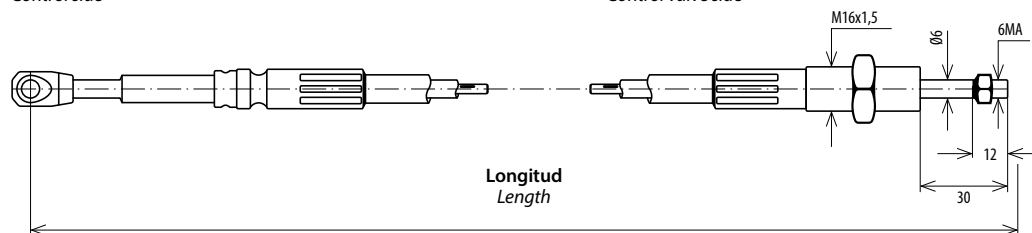
Accionamientos a distancia

Remote controls



Lado monomando
Control side

Lado distribuidor
Control valve side



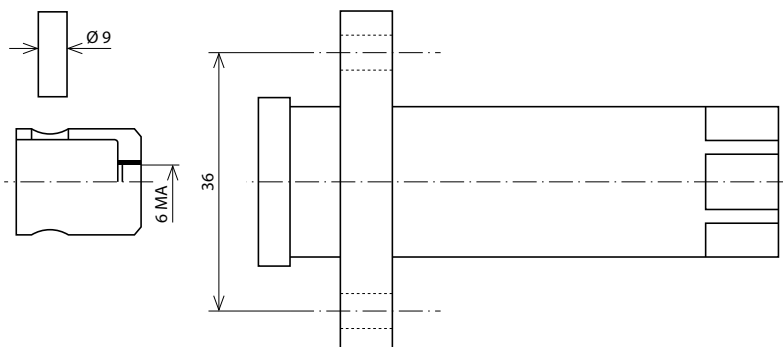
Este enganche sirve para todos nuestros monomandos y joysticks
It is used for all our controls and joysticks

Sirgas: medidas disponibles desde 1m a 6m
Sirgas: measures available from 1m to 6m



Kit montaje cable distribuidor / Cable adapter

Referencia / Part nº	Marca / Brand	Distribuidor / Control valve
801022	BLB	FM 35
801023		BM 30 / BM 40 / FM 55
801024		BM 70 / FM 85
801050		BM 150
212042		BM40
212065		BM 70
Kit sirga 102	Roquet	102/1102
Kit sirga 402		402
Kit sirga 406		406
601022	Hydrocontrol	HCD2
211624		HD3/HCD10
211710		HCD2
212057		HCD6/HCD16
212084		HCD4L
212076	Nimco	CV452
501022	Walvoil	SD 4/5 - 16
211623		SD 4/5/6
212053		SD 10/11/14
212059		SD 8
YFM35007	TrAle	YFM35
YFM55007		YFM55



Con estos kits, de fácil montaje, se pueden utilizar nuestros cables con todos los distribuidores del mercado.

With these kits, of easy assembly, you can use our cables with all the hydraulic control valves of the market.

Ver p. 149-150
See p. 149-150

DISTRIBUIDORES

Control valves
Distributeurs
Distributori

PUMPS

CONTROL COMPONENTS

MOTION DEVICE

ACCESSORIES

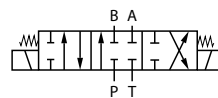
MINI POWER PACKS

HYDRAULIC COMPONENTS GREENLINE

Distribuidor eléctrico - 3/8



Electric control valve 3/8
Distributeur électrique 3/8
Distributore elettrico 3/8

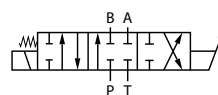


Referencia Part n°	ROSCA THREAD	VOLTAJE (V) VOLTAGE (V)	CAUDAL MÁX. (l/min) MAX. FLOW (l/min)	PRESIÓN MÁX. (bar) MAX. PRESSURE (bar)	N° PALANCAS N° LEVERS	€
YE45/1 3/8 1P DE	3/8" BSP	12 VDC	45	250	1	409,22
YE45/1 3/8 1P DE 24V	3/8" BSP	24 VDC	45	250	1	438,63
YE45/2 3/8 2P DD	3/8" BSP	12 VDC	45	250	2	736,63
YE45/2 3/8 2P DD 24V	3/8" BSP	24 VDC	45	250	2	800,68
YE45/3 3/8 3P DDD	3/8" BSP	12 VDC	45	250	3	1.162,62
YE45/3 3/8 3P DDD 24V	3/8" BSP	24 VDC	45	250	3	1.162,62
YE45/4 3/8 4P DDDD	3/8" BSP	12 VDC	45	250	4	1.525,36
YE45/4 3/8 4P DDDD 24V	3/8" BSP	24 VDC	45	250	4	1.525,36
YE45/5 3/8 5P DDDDD	3/8" BSP	12 VDC	45	250	5	1.736,20
YE45/5 3/8 5P DDDDD 24V	3/8" BSP	24 VDC	45	250	5	1.887,17
YE45/6 3/8 6P DDDDDD	3/8" BSP	12 VDC	45	250	6	2.248,98
YE45/6 3/8 6P DDDDDD 24V	3/8" BSP	24 VDC	45	250	6	*

Distribuidor eléctrico manual - 3/8



Electric manual control valve 3/8
Distributeur électrique manual 3/8
Distributore elettrico manuale -3/8

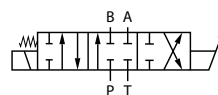


Referencia Part n°	ROSCA THREAD	VOLTAJE (V) VOLTAGE (V)	CAUDAL MÁX. (l/min) MAX. FLOW (l/min)	PRESIÓN MÁX. (bar) MAX. PRESSURE (bar)	N° PALANCAS N° LEVERS	€
YEM45/1 3/8 1P DE	3/8" BSP	12 VDC	45	250	1	705,81
YEM45/1 3/8 1P DE 24DC	3/8" BSP	24 VDC	45	250	1	705,81
YEM45/2 3/8 2P DD	3/8" BSP	12VDC	45	250	2	1.335,05
YEM45/2 3/8 2P DD 24DC	3/8" BSP	24 VDC	45	250	2	1.335,05
YEM45/3 3/8 3P DDD	3/8" BSP	12 VDC	45	250	3	1.964,23
YEM45/3 3/8 3P DDD 24DC	3/8" BSP	24 VDC	45	250	3	1.964,23

Distribuidor eléctrico manual componible YEMC50 - 3/8- Doble efecto



YEMC50 - 3/8" BSP Stackable control valve solenoid driven + handle
YEMC50 - Distributeur empiable à commande électrique et manuelle 3/8" BSP
Sezione Distributore elettrico manuale YEMC50 -3/8- Doppio effetto



Referencia Part n°	ROSCA THREAD	VOLTAJE (V) VOLTAGE (V)	CAUDAL MÁX. (l/min) MAX. FLOW (l/min)	PRESIÓN MÁX. (bar) MAX. PRESSURE (bar)	N° PALANCAS N° LEVERS	€
YEMC50/1 3/8 1P DE 12VDC	3/8" BSP	12 VDC	50	315	1	1.065,20
YEMC50/2 3/8 2P DE 12VDC	3/8" BSP	12 VDC	50	315	2	1.884,83
YEMC50/3 3/8 3P DE 12VDC	3/8" BSP	12 VDC	50	315	3	2.705,39
YEMC50/4 3/8 4P DE 12VDC	3/8" BSP	12 VDC	50	315	4	4.035,58
YEMC50/5 3/8 5P DE 12VDC	3/8" BSP	12 VDC	50	315	5	5.122,06
YEMC50/6 3/8 6P DE 12VDC	3/8" BSP	12 VDC	50	315	6	6.208,54
YEMC50/1 3/8 1P DE 24VDC	3/8" BSP	24 VDC	50	315	1	1.065,20
YEMC50/2 3/8 2P DE 24VDC	3/8" BSP	24 VDC	50	315	2	1.884,83
YEMC50/3 3/8 3P DE 24VDC	3/8" BSP	24 VDC	50	315	3	2.705,39
YEMC50/4 3/8 4P DE 24VDC	3/8" BSP	24 VDC	50	315	4	4.035,58
YEMC50/5 3/8 5P DE 24VDC	3/8" BSP	24 VDC	50	315	5	5.122,06
YEMC50/6 3/8 6P DE 24VDC	3/8" BSP	24 VDC	50	315	6	6.208,54

DISTRIBUIDORES

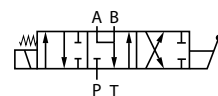
Control valves
Distributeurs
Distributori

Distribuidor eléctrico manual componible - 3/8- Motor

Sectional electric manual control valve 3/8- Motor

Distributeur électrique manual modulable 3/8- Moteur

Sezione Distributore elettrico manuale -3/8 - Motori



Referencia Part n°	ROSCA THREAD	VOLTAJE (V) VOLTAGE (V)	CAUDAL MÁX. (l/min) MAX. FLOW (l/min)	PRESIÓN MÁX. (bar) MAX. PRESSURE (bar)	Nº PALANCAS LEVERS	€
YEMC50/1 3/8 1P M 12 VDC	3/8" BSP	12 VDC	50	315	1	1.065,20
YEMC50/2 3/8 2P M 12 VDC	3/8" BSP	12 VDC	50	315	2	1.884,83
YEMC50/3 3/8 3P M 12 VDC	3/8" BSP	12 VDC	50	315	3	2.705,39
YEMC50/4 3/8 4P M 12 VDC	3/8" BSP	12 VDC	50	315	4	4.035,58
YEMC50/5 3/8 5P M 12 VDC	3/8" BSP	12 VDC	50	315	5	5.122,06
YEMC50/6 3/8 6P M 12 VDC	3/8" BSP	12 VDC	50	315	6	6.208,54
YEMC50/1 3/8 1P M 24 VDC	3/8" BSP	24 VDC	50	315	1	1.065,20
YEMC50/2 3/8 2P M 24 VDC	3/8" BSP	24 VDC	50	315	2	1.884,83
YEMC50/3 3/8 3P M 24 VDC	3/8" BSP	24 VDC	50	315	3	2.705,39
YEMC50/4 3/8 4P M 24 VDC	3/8" BSP	24 VDC	50	315	4	4.035,58
YEMC50/5 3/8 5P M 24 VDC	3/8" BSP	24 VDC	50	315	5	5.122,06
YEMC50/6 3/8 6P M 24 VDC	3/8" BSP	24 VDC	50	315	6	6.208,54

FLUIDAL

PUMPS

CONTROL COMPONENTS

MOTION DEVICE

ACCESSORIES

MINI POWER PACKS

HYDRAULIC COMPONENTS
GREENLINE

DISTRIBUIDORES

Control valves
Distributeurs
Distributori

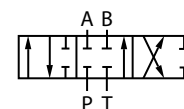
PUMPS

CONTROL COMPONENTS



Corredera doble efecto YE45

Closed center spool YE45
Tiroir centre fermé YE45
Cursore doppio effetto YE45



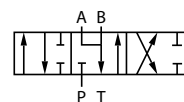
Referencia Part n°	€
YFM45CORDE	68,15

MOTION DEVICE



Corredera motor YE 45

Open center spool YE45
Tiroir centre ouvert YE45
Cursore motore YE 45



Referencia Part n°	€
YFM45CORM	68,15

ACCESSORIES



Bobinas para distribuidores YE45

Coils for YE45 control valves
Bobines pour distributeurs YE45
Bobine per distributori YE45

Referencia Part n°	VOLTAJE (V) VOLTAGE (V)	POTENCIA (W) POWER (W)	€
YE45BOB12DC	12 VDC	36	107,72
YE45BOB24DC	24 VDC	36	117,99

MINI POWER PACKS



Bobinas para distribuidores YEM45

Coils for YEM45 control valves
Bobines pour distributeurs YEM45
Bobine per distributori YEM45

Referencia Part n°	VOLTAJE (V) VOLTAGE (V)	POTENCIA (W) POWER (W)	€
YEM45BOB12DC	12 VDC	36	241,88
YEM45BOB24DC	24 VDC	36	353,91

HYDRAULIC COMPONENTS
GREENLINE

DISTRIBUIDORES

Control valves
Distributeurs
Distributori

PUMPS

CONTROL COMPONENTS

MOTION DEVICE

ACCESSORIES

MINI POWER PACKS

HYDRAULIC COMPONENTS
GREENLINE



Joystick hidráulico sin bloqueo

Hydraulic joystick without safety lock
Joystick hydraulique sans blocage
Impugnatura idraulica senza blocco

Referencia Part n°	ROSCA THREAD	CAUDAL (l/min) FLOW (l/min)	€
JOYSTICKHIDRA01	1/4" BSP	5-20	355,78



Joystick hidráulico con bloqueo

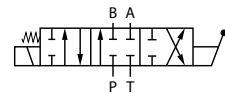
Hydraulic joystick with safety lock
Joystick hydraulique avec blocage
Impugnatura idraulica con blocco

Referencia Part n°	ROSCA THREAD	CAUDAL (l/min) FLOW (l/min)	€
JOYSTICKHIDRA02	1/4" BSP	5-20	375,68



Modelo YFMC70, accionam.manual palanca y retorno por muelle a posición central.Limit.presión

YFMC70 type, manual operat., with lever and return to center by spring. Relief valve
Type YFMC70. Commande manuelle, retour au centre par ressort avec limiteur de pression
Modello YFMC70, azion. manuale a leva, ritorno al centro a molla.Valv. Max



Referencia Part n°	ROSCA THREAD	CAUDAL MÁX. (l/min) MAX. FLOW (l/min)	PRESIÓN MÁX. (bar) MAX. PRESSURE (bar)	Nº PALANCAS Nº LEVERS	€
YFMC70/1 1P 1/2 DE	1/2" BSP	70	250	1	322,93
YFMC70/2 2P 1/2 DD	1/2" BSP	70	250	2	526,51
YFMC70/3 3P 1/2 DDD	1/2" BSP	70	250	3	673,91
YFMC70/4 4P 1/2 DDDD	1/2" BSP	70	250	4	877,49
YFMC70/5 5P 1/2 DDDDD	1/2" BSP	70	250	5	1.052,95
YFMC70/6 6P 1/2 DDDDDD	1/2" BSP	70	250	6	1.263,54



Cuerpo central YFMC70

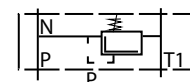
YFMC70 control center body section
Élément distributeur YFMC70
Sezione distributore YFMC70

Referencia Part n°	DESCRIPCIÓN DESCRIPTION	€
YFMC70DE	Center closed / Doble efecto	217,60
YFMC70M	Open center / Motor	217,60
YFMC70SE	Single Acting / Simple efecto	217,60



Cuerpo de entrada YFMC70/YFMC100

YFMC70/YFMC100 inlet section
Élément d'entrée YFMC70/YFMC100
Corpo di entrata YFMC70/YFMC100



Referencia Part n°	DISTRIBUIDOR CONTROL VALVE	€
TEYFMC70/100	YFMC70/100	96,84



Cuerpo de salida YFMC70/YFMC100

YFMC70/YFMC100 exit section
Élément de sortie YFMC70/YFMC100
Corpo di uscita YFMC70/YFMC100

Referencia Part n°	DISTRIBUIDOR CONTROL VALVE	€
TFYFMC70/100	YFMC70/100	77,49

DISTRIBUIDORES

Control valves
Distributeurs
Distributori

PUMPS

CONTROL COMPONENTS

MOTION DEVICE

ACCESSORIES

MINI POWER PACKS

HYDRAULIC COMPONENTS GREENLINE

Correderas YFMC70

Spools for YFMC70

Tiroirs pour YFMC70

Cursore YFMC70



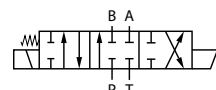
Referencia Part n°	DESCRIPCIÓN DESCRIPTION	€
YFMC70CORDE	Center closed / Doble efecto	59,68
YFMC70CORM	Open center / Motor	59,68

Modelo YFMC100, accionam.manual palanca y retorno por muelle a posición central.Limit.pres.+palanca

YFMC100 type, manual operat., with lever and return to center by spring. Relief valve

Type YFMC100. Commande manuelle, retour au centre par ressort avec limiteur de pression

Modello YFM100, azion. manuale a leva, ritorno al centro a molla.Valv. Max



Referencia Part n°	ROSCA THREAD	CAUDAL MÁX.(l/min) MAX. FLOW (l/min)	PRESIÓN MAX. (bar) MAX. PRESSURE (bar)	Nº PALANCAS LEVERS	€
YFMC100/1 1P 3/4 DE	3/4" BSP	100	210	1	386,11
YFMC100/2 2P 3/4 DD	3/4" BSP	100	210	2	596,64
YFMC100/3 3P 3/4 DDD	3/4" BSP	100	210	3	877,49
YFMC100/4 4P 3/4 DDDD	3/4" BSP	100	210	4	1.088,08
YFMC100/5 5P 3/4 DDDDD	3/4" BSP	100	210	5	1.403,94
YFMC100/6 6P 3/4 DDDDDD	3/4" BSP	100	210	6	1.614,59

Cuerpo central YFMC100

YFMC100 control central body section

Élément distributeur YFMC100

Sezione distributore YFMC100



Referencia Part n°	DESCRIPCIÓN DESCRIPTION	€
YFMC100DE	Center closed / Doble efecto	217,60
YFMC100M	Open center / Motor	217,60
YFMC100SE	Single Acting / Simple efecto	217,60

Racores de continuación de presión

Carry over coupling

Raccord centre à suivre

Raccordo di continuazione pressione (carry-over)



Referencia Part n°	DISTRIBUIDOR CONTROL VALVE	€
YFM00007	YFMC70/YFMCE70/YFMC100	19,67

DISTRIBUIDORES

Control valves
Distributeurs
Distributori

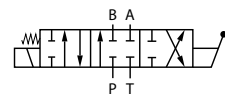
Distribuidor eléctrico manual componible - 3/8



Stackable electric manual control valve 3/8

Distributeur électrique manual empilable 3/8

Distributore elettrico manuale componibile -3/8



Referencia Part n°	ROSCA THREAD	VOLTAJE (V) VOLTAGE (V)	CAUDAL MÁX.(l/min) MAX. FLOW (l/min)	PRESIÓN MAX. (bar) MAX. PRESSURE (bar)	Nº PALANCAS Nº LEVERS	€
YEMC50/1 3/8 1P DE 12VDC	3/8" BSP	12 VDC	50	315	1	1.065,20
YEMC50/2 3/8 2P DE 12VDC	3/8" BSP	12 VDC	50	315	2	1.884,83
YEMC50/3 3/8 3P DE 12VDC	3/8" BSP	12 VDC	50	315	3	2.705,39
YEMC50/4 3/8 4P DE 12VDC	3/8" BSP	12 VDC	50	315	4	4.035,58
YEMC50/5 3/8 5P DE 12VDC	3/8" BSP	12 VDC	50	315	5	5.122,06
YEMC50/6 3/8 6P DE 12VDC	3/8" BSP	12 VDC	50	315	6	6.208,54
YEMC50/1 3/8 1P DE 24VDC	3/8" BSP	24 VDC	50	315	1	1.065,20
YEMC50/2 3/8 2P DE 24VDC	3/8" BSP	24 VDC	50	315	2	1.884,83
YEMC50/3 3/8 3P DE 24VDC	3/8" BSP	24 VDC	50	315	3	2.705,39
YEMC50/4 3/8 4P DE 24VDC	3/8" BSP	24 VDC	50	315	4	4.035,58
YEMC50/5 3/8 5P DE 24VDC	3/8" BSP	24 VDC	50	315	5	5.122,06
YEMC50/6 3/8 6P DE 24VDC	3/8" BSP	24 VDC	50	315	6	6.208,54

Bobinas para distribuidores YEMC50



Coils for YEMC50 control valves

Bobines pour distributeurs YEMC50

Bobine per distributori YEMC50

Referencia Part n°	VOLTAJE (V) VOLTAGE (V)	POTENCIA (W) POWER (W)	€
YEMC50BOB12DC	12 VDC	60w	406,35
YEMC50BOB24DC	24 VDC	60w	406,35

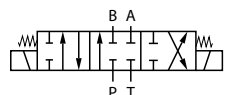
Distribuidor eléctrico componible YFMCE70 - 1/2" BSP



YFMCE70 - 1/2" BSP Stackable control valve solenoid driven

YFMCE70 - Distributeur empilable à commande électrique 1/2" BSP

YFMCE70 - Distributore elettrico componibile 1/2 "BSP



Referencia Part n°	ROSCA THREAD	CAUDAL MÁX. (l/min) MAX. FLOW (l/min)	PRESIÓN MAX. (bar) MAX. PRESSURE (bar)	Nº PALANCAS LEVERS	€
YFMCE70/1 1P 1/2 DE	1/2" BSP	70	300	1	645,80
YFMCE70/2 2P 1/2 DD	1/2" BSP	70	300	2	1.172,25
YFMCE70/3 3P 1/2 DDD	1/2" BSP	70	300	3	1.621,54
YFMCE70/4 4P 1/2 DDDD	1/2" BSP	70	300	4	2.141,03

Cuerpo YFMCE70



YFMCE70 Control Valve Section

Élément distributeur YFMCE70

Sezione distributore YFMCE70

Referencia Part n°	DESCRIPCIÓN DESCRIPTION	€
YFMCE70 SE 12VDC	Single Acting / Simple efecto	519,43
YFMCE70 DE 12VDC	Center closed / Doble efecto	519,43

Bobinas YFMCE70



YFMCE70 coils

Bobines YFMCE70

Bobine YFMCE70

Referencia Part n°	VOLTAJE (V) VOLTAGE (V)	POTENCIA (W) POWER (W)	€
BOBYFMCE7012VDC	12VDC	60	91,30
BOBYFMCE7024VDC	24VDC	60	91,30

DISTRIBUIDORES

Control valves
Distributeurs
Distributori

PUMPS

CONTROL COMPONENTS

MOTION DEVICE

ACCESSORIES

MINI POWER PACKS

HYDRAULIC COMPONENTS
GREENLINE

Correderas para distribuidores YFMCE70

NEW



Spools for YFMCE70

Tiroirs pour YFMCE70

Cursore YFMCE70

Referencia Part n°	DESCRIPCIÓN DESCRIPTION	€
YFMCE70CORM	Open center / Motor	77,86
YFMCE70CORD	Center closed / Doble efecto	77,86

Cuerpo entrada YFMCE70

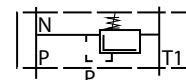
NEW



YFMCE70 inlet section

Élément d'entrée YFMCE70

Corpo di entrata YFMCE70



Referencia Part n°	DISTRIBUIDOR CONTROL VALVE	€
TEYFMCE70	YFMCE70 (válvula limitadora) / YFMCE70 (relief valve)	105,27

Cuerpo de salida ver página 27 / Exit section check page 27 / Élément de sortie sur la page 27 / Corpo di uscita in pagina 27

FLUIDAL

DISTRIBUIDORES

Control valves
Distributeurs
Distributori

Distribuidores para palas monobloque 2 cuerpos (90 L/min)



Hydraulic control valve for wheeled loaders 2 sections (90 L/min)
Distributeur pour pellesmécaniques monobloc 2 corps (90 L/min)
Distributori per pale meccaniche, monoblocco 2 corpi, 90 lt./min.

Referencia Part n°	DESCRIPCIÓN DESCRIPTION	€
DPM90	Open center	624,54
DPM90 LS	Load sensing	670,56
NEW KITSIRGADPM90	Cable connection kit	36,23

Distribuidores para palas monobloque eléctrico 2 cuerpos (90 L/min) Proporcional



Electric Hydraulic control valve for wheeled loaders 2 sections (90 L/min) Proportional
Distributeur pour pellesmécaniques monobloc électriques 2 corps (90 L/min) Proportionnel
Distributori elettrici per pale meccaniche, 2 sezioni (90 L/min) Proporzionale

Referencia Part n°	DESCRIPCIÓN DESCRIPTION	€
DPMEP90	Open center	5.641,02
DPMEP90LS	Load sensing	5.842,48

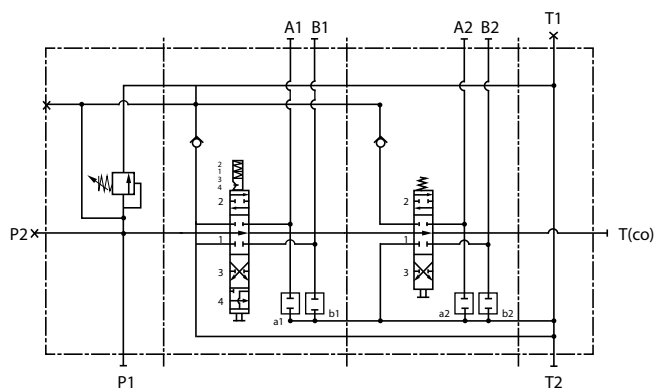
Incluye joystick proporcional + cableado. / Proportional joystick and wiring included. / Joystick proportionnel et faisceaux inclus. / Include joystick proporzionale + cablaggio.

Distribuidores para Palas

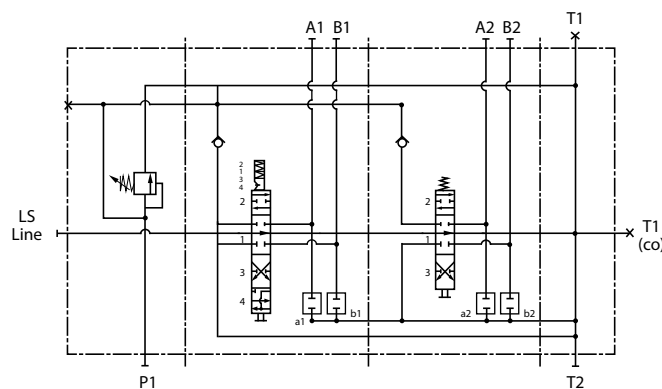
Hydraulic Control Valves for Wheeled Loaders
Distributeurs pour Pelles Mécaniques

TrΔle®

Centro abierto DPM90
Open center DPM90
Centre ouvert DPM90



Detección de carga DPM90 LS
Load Sensing DPM90 LS
Détection de charge DPM90 LS



Para cualquier otro tipo de modelo, consultar / For any other type, consult us / Pour tous les autres types, consultez-nous.